



Mobile Connect User Manual for MAC OS X



HUAWEI

Huawei Technologies Co., Ltd.

All rights reserved

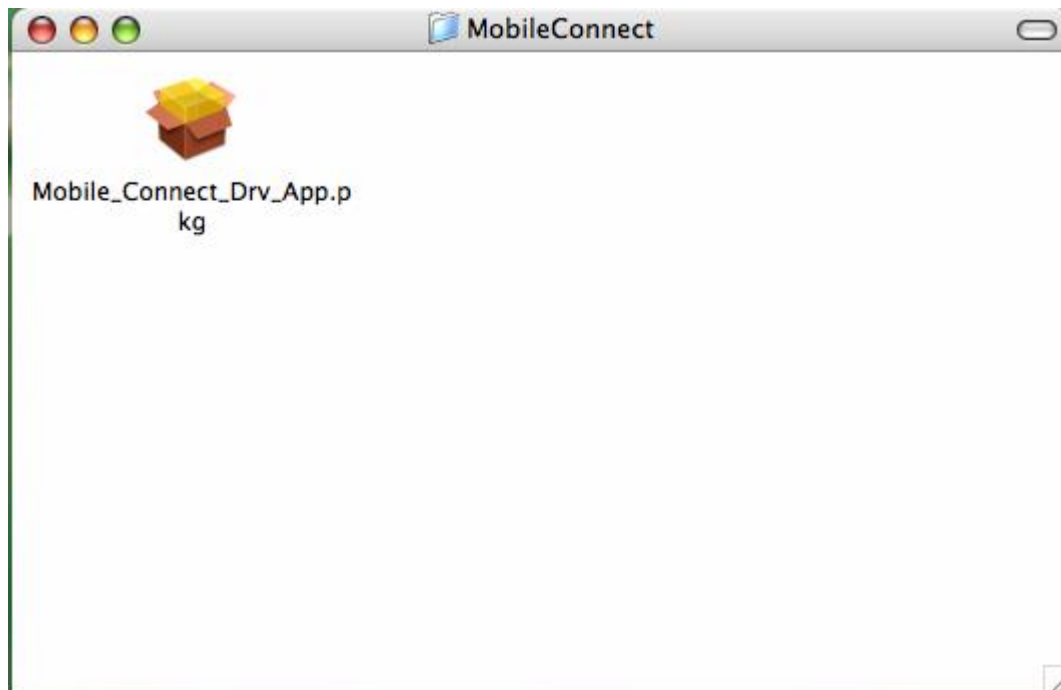


Introduction

- u The Mobile Connect application is applicable to all Huawei data cards, including E220,E270, E620 ,E630, E660, E800 and E870.
- u This manual describes the operations of the Mobile Connect application.
- u This application requires MAC OS X 10.4 or later.

Operation Guide

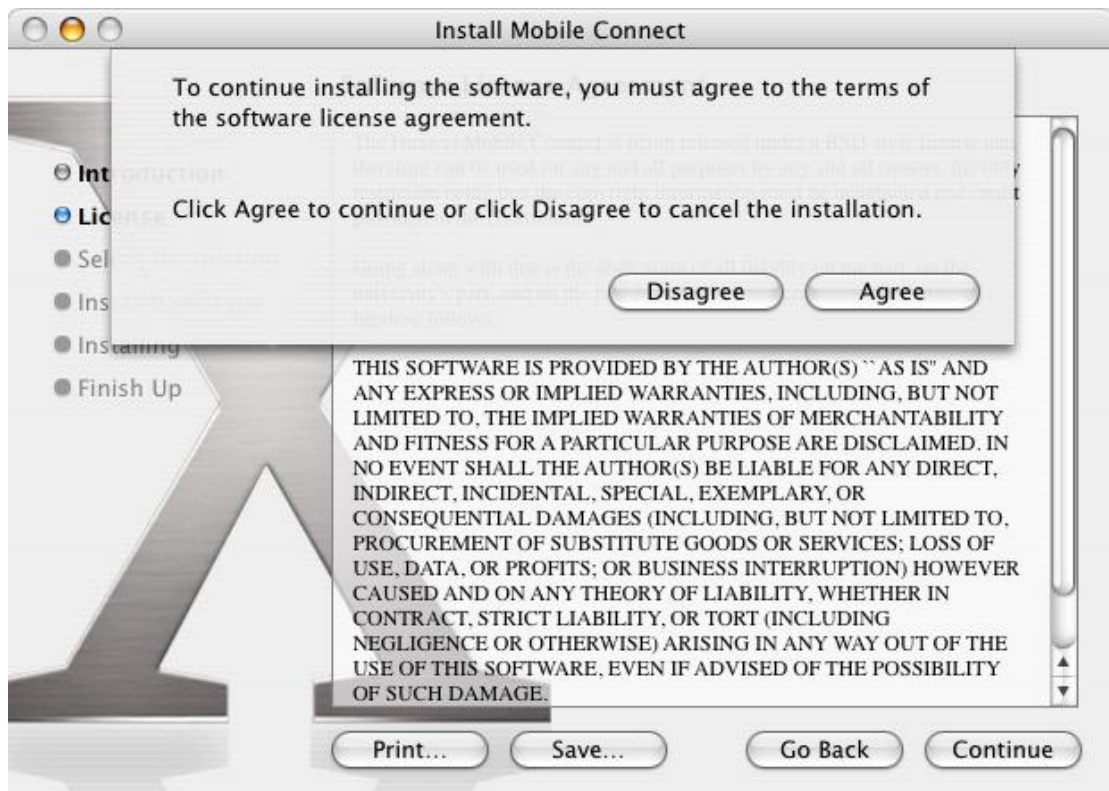
1. To install the Mobile Connect application on your Mac, double-click the file **. Mobile_Connect_Drv_App.pkg**



2. Click "continue".



3. Click “Agree” to accept the license.





4. Select a volume to install the application and click “continue”



5. Enter the password of the current user and click **OK**





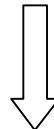
6. Wait while the application is being installed.

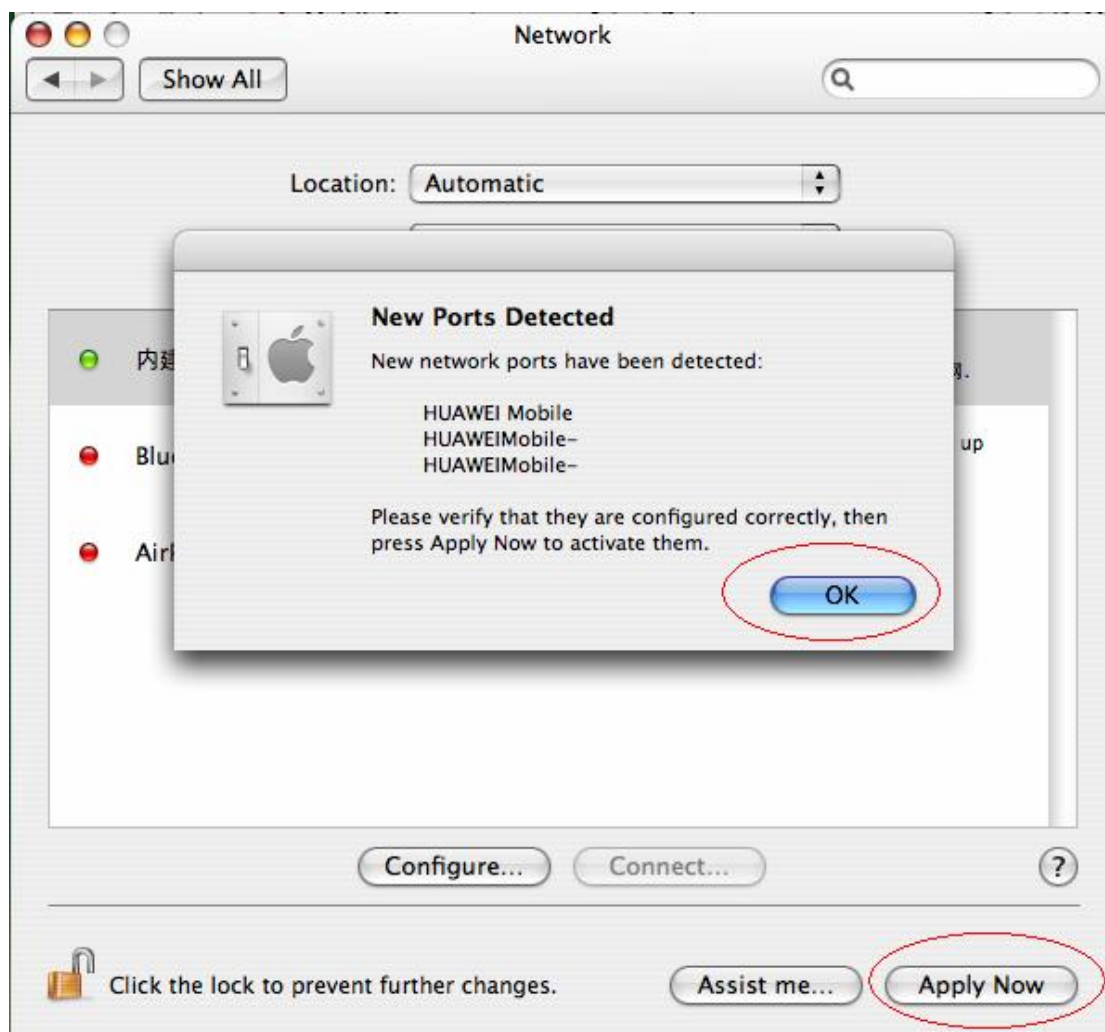
When the installation is finished, you will see the following window.



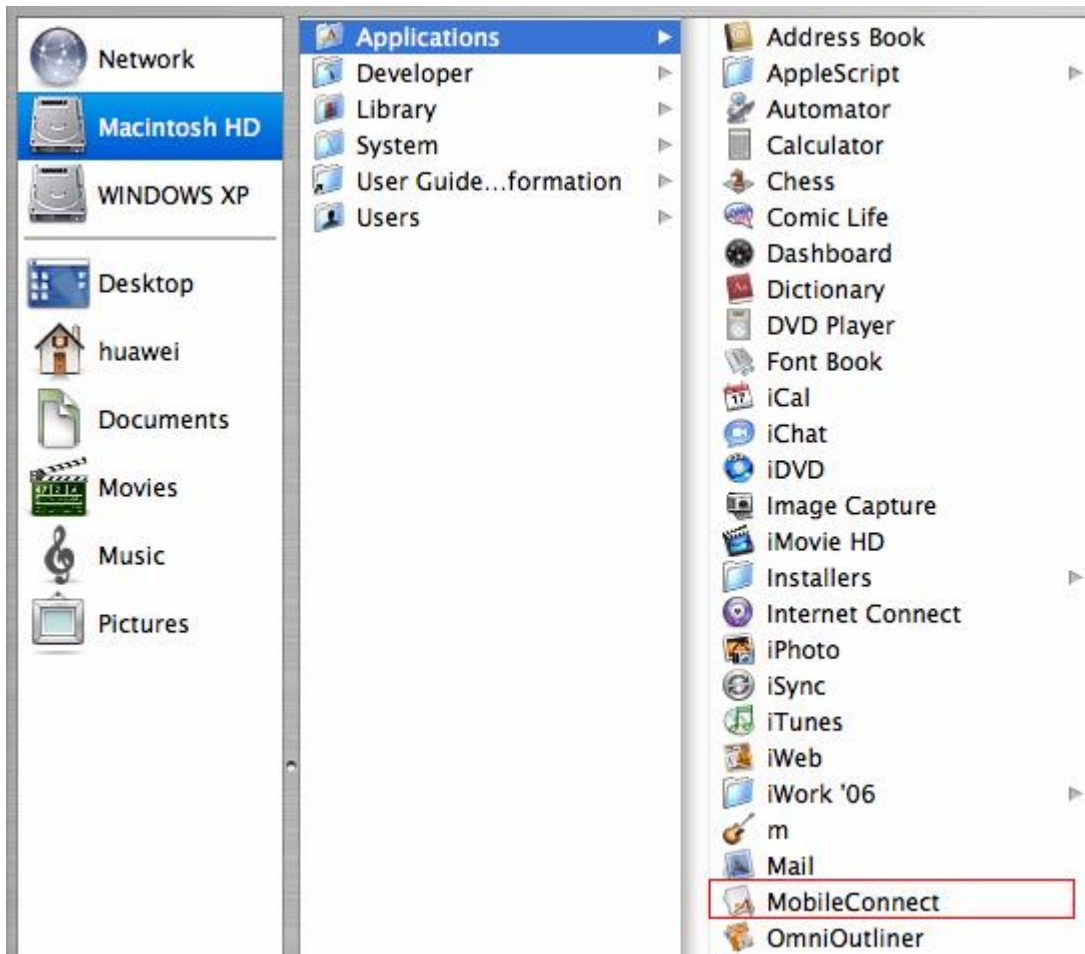
7. If it's the first time you using Mobile Connect on your Mac, please open "System Preferences", choose "Network". The Mac OS X will tell you new ports detected. Click "OK" and click "Apply". Then you can close this window.







8. Start the Mobile Connect application by double click "Application->MobileConnect"



9. Enter your login password to open the application.





10. If no SIM card is present, you will see the following message on the computer display.



11. Insert a data card with a SIM card.

If the data card is locked by PIN code, you will see the Verify PIN dialog box.

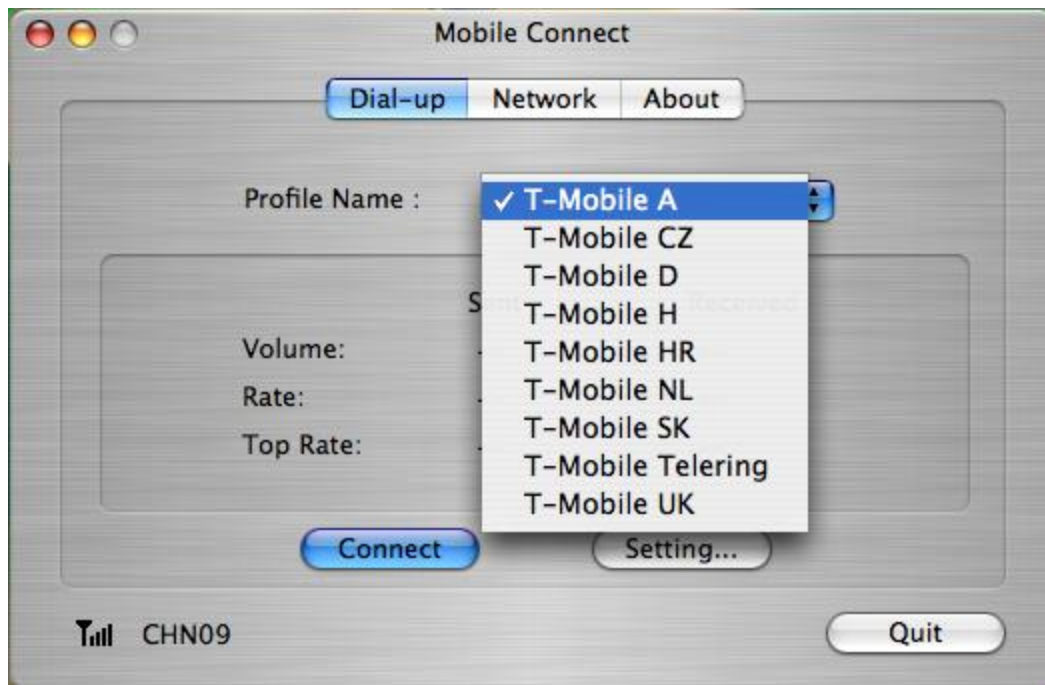


12. If the SIM card is locked, you will see the **Sim Unlock** dialog box. Enter the correct unlock code. Then the main interface will be displayed

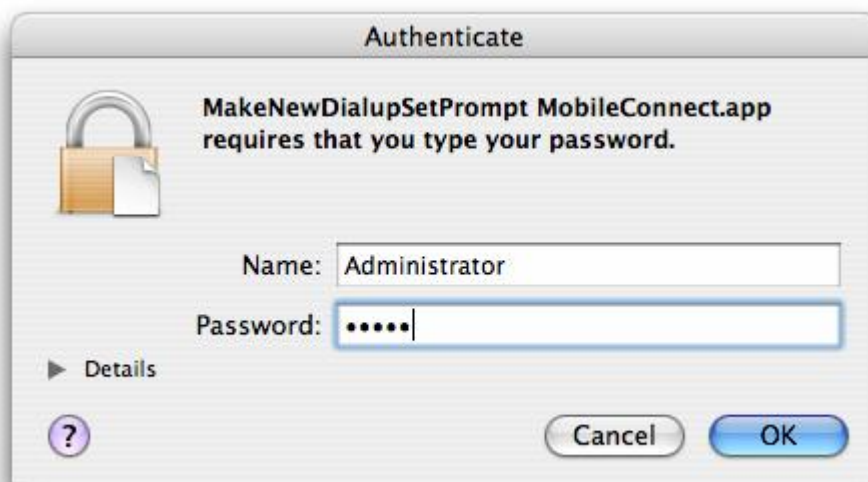


13. You can select the profile as you like and click **Connect** to dial-up.

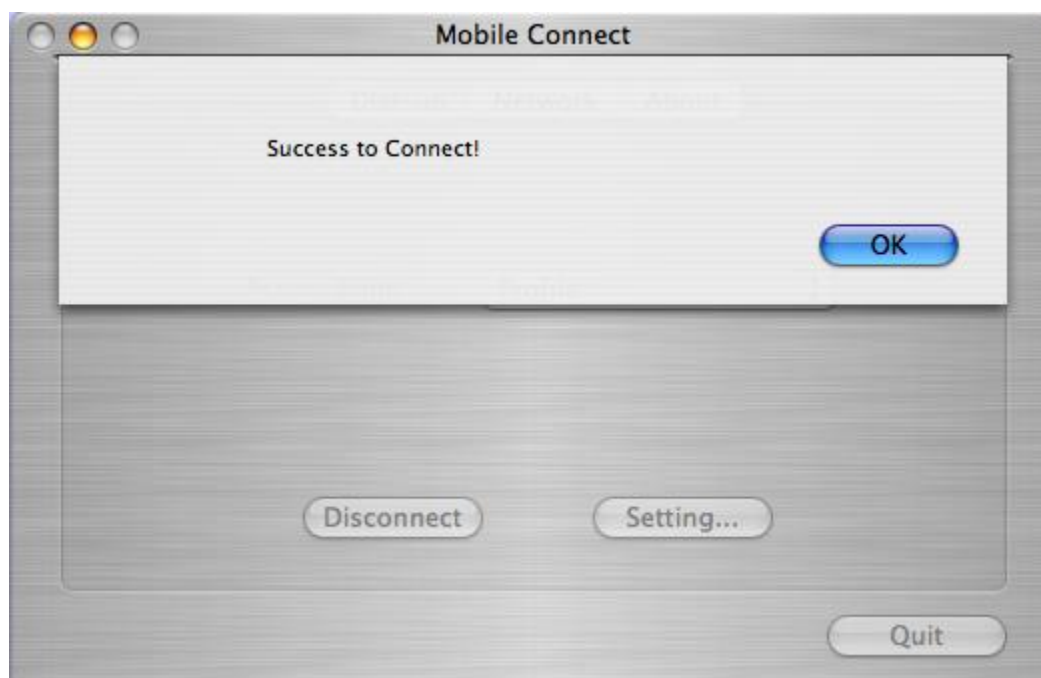




14. While dialing, the MAC OS X may ask you to type your login password. Input your login password and click **OK** to continue.



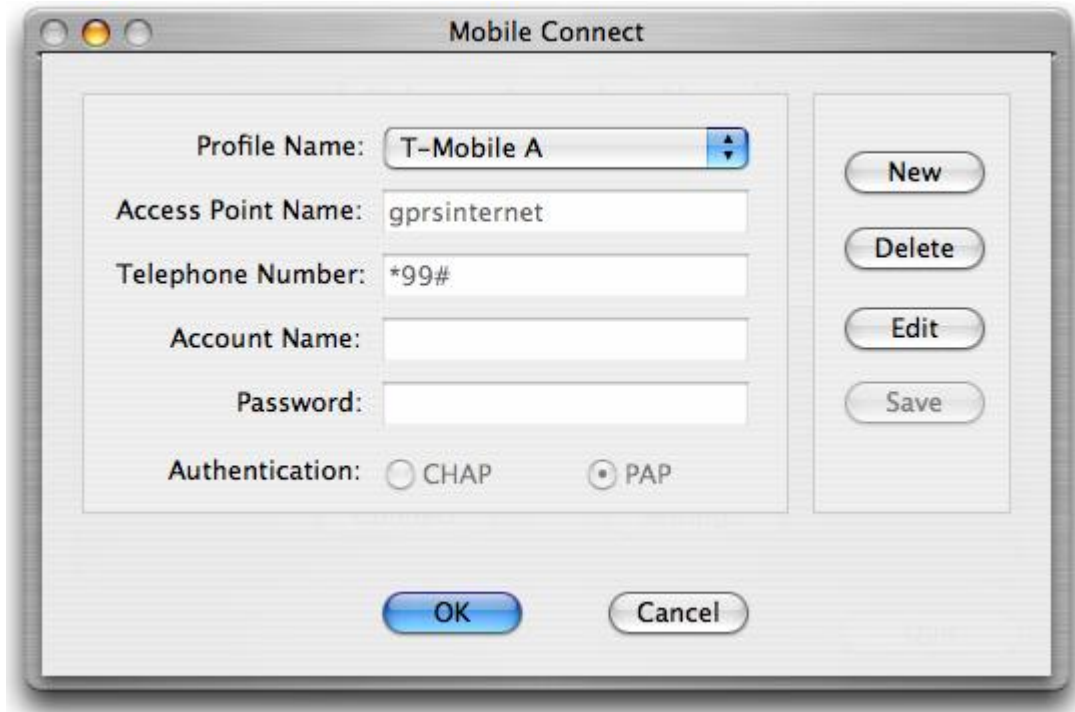
15. If connected successfully, the following message window will be shown.



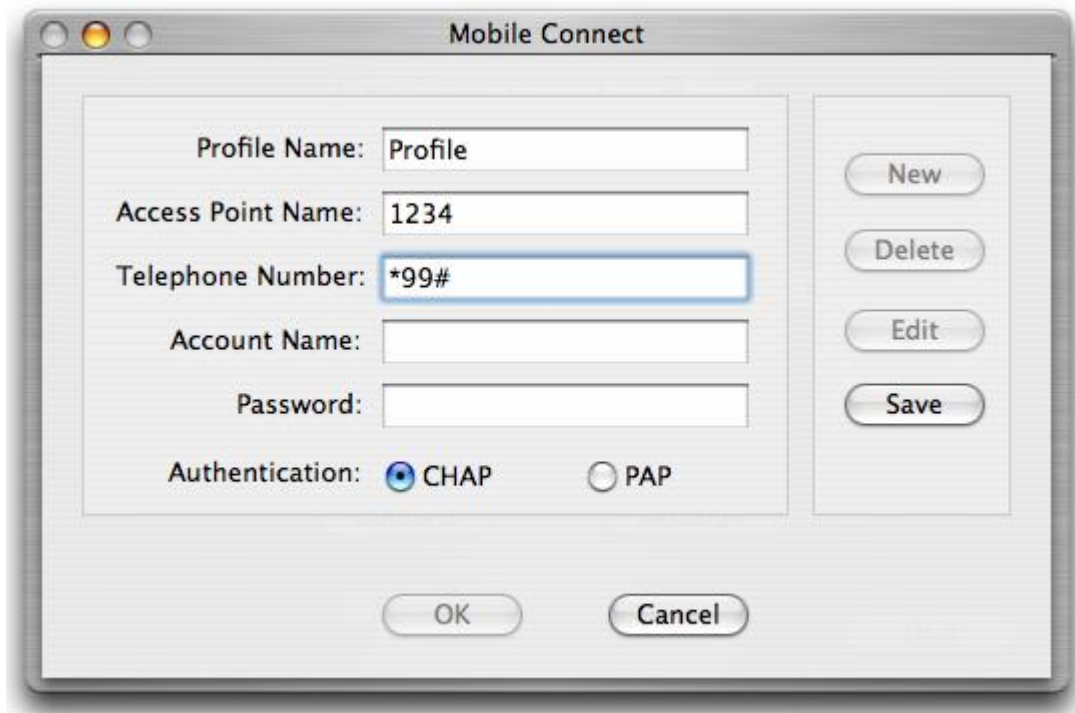
16. To disconnect from the network, click **Disconnect**. Then the following window will be shown.



17. You can also create you own profiles by click **Setting** on the main window. Then the setting window will show up.



18. click **New** to set the parameters. Input the Profile Name as you like,
Then input network parameters:
Telephone Number: for example *99#. And input Account Name , Password if necessary.
Please get your Telephone Number, Account Name , Password from your service provider.

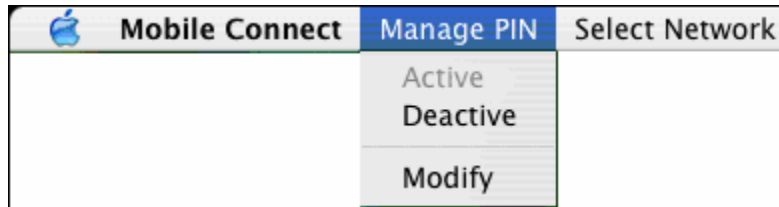


Click **Save** to save your setting and click **OK** to return the main window.



19. To enable the PIN protect, select Active PIN from the menu on the top of the screen.

To disable the PIN protect, select Deactive PIN.



20. And you can also choose “Modify” to change your PIN code while the PIN is activated. In the following dialog box, enter the current PIN code, the new PIN code and confirm the new PIN code. Then the PIN code is changed.

