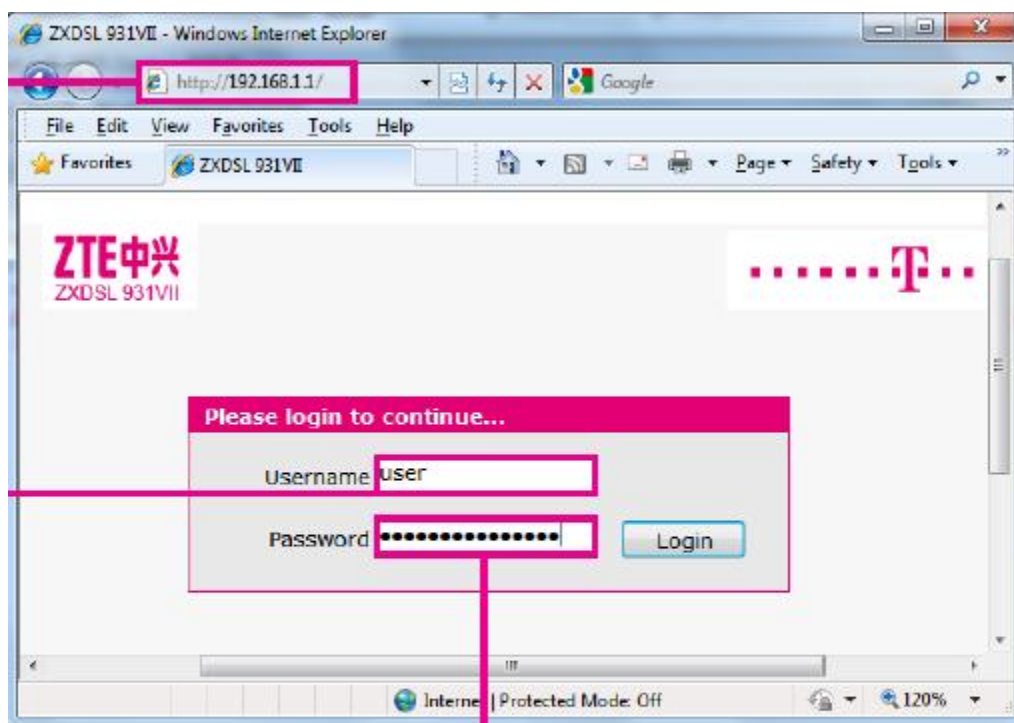



## ZTE 931 VII

- Otvorite web preglednik (npr. Internet Explorer), upišite adresu 192.168.1.1 i pritisnite Enter na tipkovnici.
- U otvorenom prozoru pod Username upišite: user, a pod Password upišite podatak SN koji se nalazi na naljepnici sa stražnje strane modema.



Ručno podešavanje MAXdsl usluge:

- u otvorenom prozoru odaberite Network -> WAN -> DSL WAN Connection. U polju Connection Name odaberite Internet\_ADSL, pričekajte par sekundi i u prazna polja za username i password upišite MAXdsl podatke s obavijesti koje ste dobili u svom MAXtv paketu i pritisnite Apply

Status	Path:Network-WAN-DSL WAN Connection <a href="#">Logout</a>	
<b>Network</b>	Connection Name <input type="text" value="Internet_ADSL"/>	
WAN	MTU <input type="text" value="1492"/>	
DSL WAN Connection	PPP 	
ETH WAN Connection	PPPoE pass-through <input type="checkbox"/>	
WLAN	Username <input type="text" value="kor.ime@htnet-dsl"/>	
LAN	Password <input type="password" value="....."/>	
<b>Security</b>	Authentication Type <input type="text" value="Auto"/>	
<b>Application</b>	Connection Trigger <input type="text" value="Always On"/>	
<b>Administration</b>		