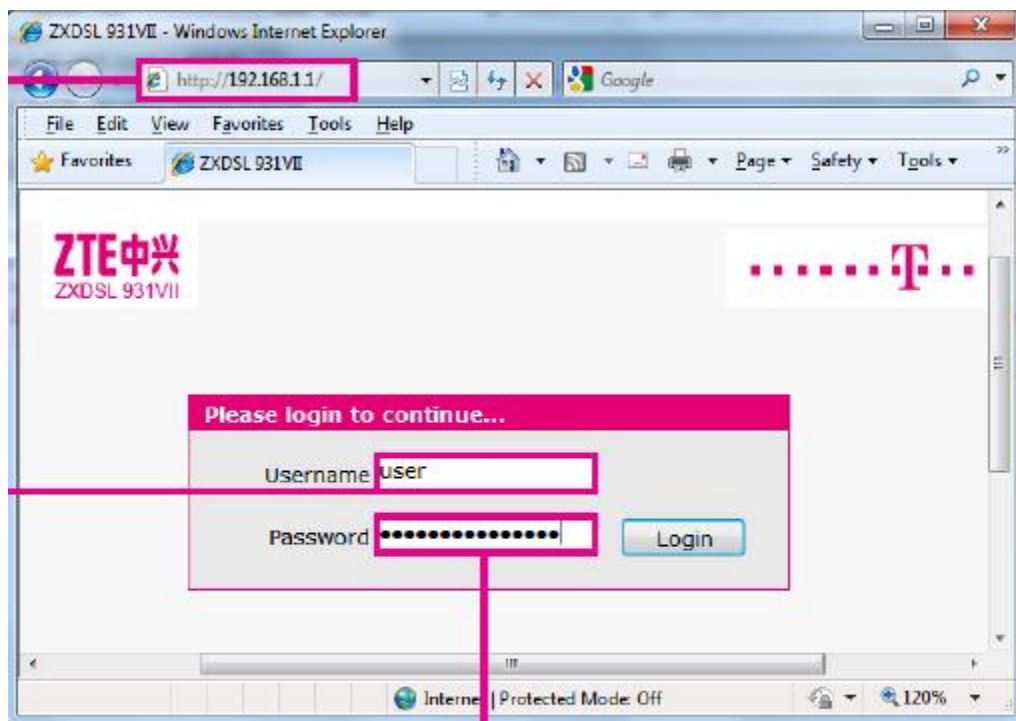


ZTE 931 VII

- Otvorite web preglednik (npr. Internet Explorer), upišite adresu 192.168.1.1 i pritisnite Enter na tipkovnici.
- U otvorenom prozoru pod Username upišite: user, a pod Password upišite podatak SN koji se nalazi na naljepnici sa stražnje strane modema.



Ručno podešavanje bežične mreže (WLAN):

- u otvorenom prozoru odaberite Network -> WLAN -> Basic i u otvorenom prozoru u polju Wireless RF Mode odaberite Enabled, a zatim pritisnite Submit.

Status	Path:Network-WLAN-Basic	Logout
Network		
WAN		
WLAN		
Basic	Wireless RF Mode <input type="text" value="Enabled"/>	
SSID Settings	Enable Isolation <input type="checkbox"/>	
Security	Mode <input type="text" value="Mixed(802.11b+802.11g+802.11n)"/>	
	Country/Region <input type="text" value="China"/>	
	Band Width <input type="text" value="20Mhz"/>	

- Nakon toga odaberite Network -> WLAN -> SSID Settings i u polju SSID Name upišite željeni naziv bežične mreže, a zatim pritisnite Submit.

Status	Path:Network-WLAN-SSID Settings	Logout
Network		
WAN		
WLAN		
Basic	Choose SSID <input type="text" value="SSID1"/>	
SSID Settings	Hide SSID <input type="checkbox"/>	
Security	Enable SSID <input checked="" type="checkbox"/>	
Access Control List	Enable SSID Isolation <input type="checkbox"/>	
Associated Devices	Maximum Clients <input type="text" value="32"/> (1 ~ 32)	
WMM	SSID Name <input type="text" value="MojaMreza"/> (1 ~ 32 characters)	
WiFi Restrictions	Priority <input type="text" value="0"/>	
WPS		
LAN		

- Da biste zaštitili bežičnu mrežu, obavezno odaberite Network -> WLAN -> Security i u polju Authentication Type preporučujemo odabrati WPA/WPA2-PSK. Nakon toga u polju WPA Passphrase upišite lozinku. Na kraju pritisnite Submit.

Status	Path:Network-WLAN-Security	Logout
Network		
WAN		
WLAN		
Basic		
SSID Settings		
Security		
Access Control List		
Associated Devices		
WMM		

Choose SSID	<input type="text" value="SSID1"/>
Authentication Type	<input type="text" value="WPA/WPA2-PSK"/>
WPA Passphrase	<input type="text" value="uNJXXHmT"/> (8 ~ 63 characters)
WPA Group Key Update Interval	<input type="text" value="600"/> sec
WPA Encryption Algorithm	<input type="text" value="TKIP+AES"/>